

SEPTEMBER 2018

CLECO POWER LLC BRAME ENERGY CENTER



SEISMIC IMPACT ZONES ASSESSMENT

FLY ASH POND

Prepared By:

**Providence Engineering and
Environmental Group LLC**

1201 Main Street

Baton Rouge, Louisiana 70802

(225) 766-7400

www.providenceeng.com

Project Number 002-213



TABLE OF CONTENTS

<u>Section</u>	<u>Page</u>
1.0 INTRODUCTION	1
2.0 SEISMIC IMPACT ZONES ASSESSMENT	1
3.0 CONCLUSION	1

LIST OF FIGURES

<u>Figure</u>	
1	Site Location Map
2	Site Map

LIST OF APPENDICES

<u>Appendix</u>	
A	P.E. Certification

1.0 INTRODUCTION

Providence was contracted by Cleco Power LLC (Cleco) to conduct a seismic impact zones assessment of the Fly Ash Pond at Cleco's Brame Energy Center. Recent Coal Combustion Residual (CCR) regulations at 40 CFR 257.63 established requirements for owners and operators to conduct a seismic impact zones assessment by a qualified professional engineer.

40 CFR 257.63 (a) states:

New CCR landfills, existing and new CCR surface impoundments, and all lateral expansions of CCR units must not be located in seismic impact zones unless the owner or operator demonstrates by the dates specified in paragraph (c) of this section that all structural components including liners, leachate collection and removal systems, and surface water control systems, are designed to resist the maximum horizontal acceleration in lithified earth material for the site."

The Cleco Brame Energy Center is located near Lena in Rapides Parish, Louisiana. A site location map showing the Brame Energy Center is included as **Figure 1**.

This seismic impact zones assessment pertains to the Fly Ash surface impoundment (Pond) utilized for the Unit 2 coal-fired generation unit. A site map for the Fly Ash Pond is included as **Figure 2**. For an existing CCR surface impoundment, the seismic impact zones assessment must be completed no later than October 17, 2018.

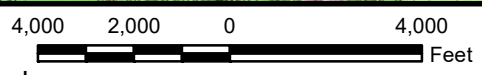
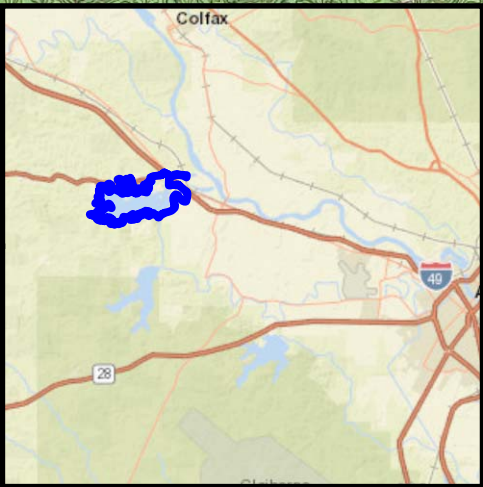
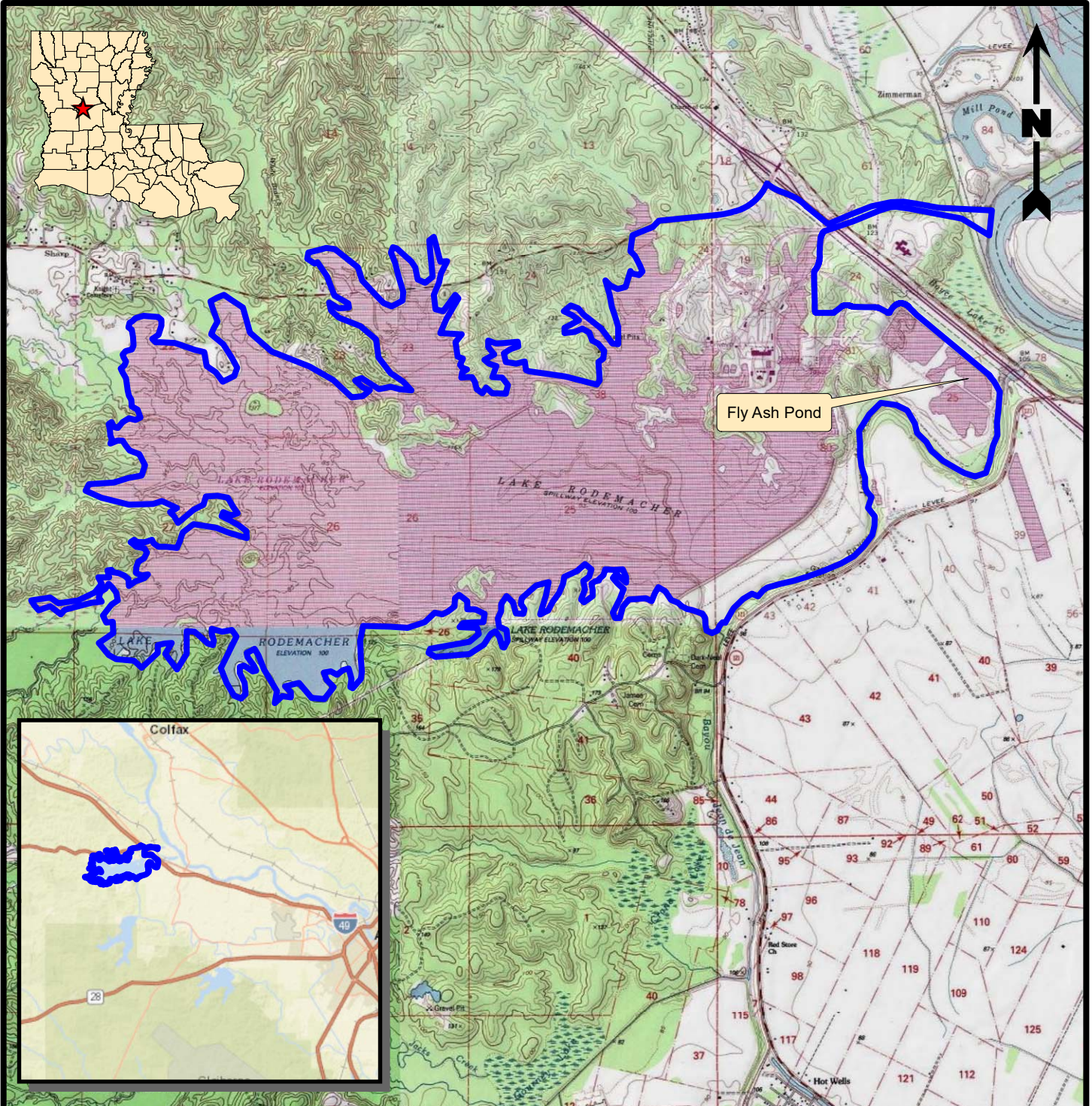
2.0 SEISMIC IMPACT ZONES ASSESSMENT

40 CFR 257.53 states that a seismic impact zone is defined as an area having 2% or greater probability that the maximum expected horizontal acceleration, expressed as a percentage of the earth's gravitational pull (g), will exceed 0.10 g in 50 years. The 2% probability seismic map created on the USGS website, Earthquake Hazards Program, Information By Region - Louisiana, (<https://earthquake.usgs.gov/earthquakes/byregion/louisiana-haz.php>) indicates between 4% g (0.04 g) and 8% g (0.08 g) for the facility, which is below the specified 0.10 g noted in the regulation.


3.0 CONCLUSION

Based on the results from the seismic impact zones assessment for the Fly Ash Pond, Providence concludes that the surface impoundment is not located in a seismic impact zone that will exceed 0.10 g in 50 years. The Fly Ash Pond meets the requirements at 257.63 of the CCR regulations. **Appendix A** contains a P.E. Certification that attests to this assessment.

FIGURE 1
SITE LOCATION MAP



Legend

 Property Boundary

Reference

Base map comprised of U.S.G.S. 7.5 minute topographic maps, "Lena, LA", "Boyce, LA", "Jericho, LA", and "Gardner, LA".

Site Location Map

Seismic Impact Zones Assessment - Fly Ash Pond
Boyce, Rapides Parish, Louisiana

Cleco Power LLC
Brame Energy Center



Drawn By	LMM	06/21/17
Checked By	LMH	06/21/17
Approved By	CVH	06/21/17

Project Number	002-213	1 Figure
Drawing Number	002-213-A007	

FIGURE 2
SITE MAP

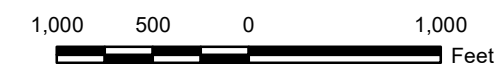


Legend

- Property Boundary
- Fly Ash Pond

Reference

Base map comprised of Google Earth aerial imagery from 10/03/14.



Site Map

Seismic Impact Zones Assessment - Fly Ash Pond
 Boyce, Rapides Parish, Louisiana

Cleco Power LLC
 Brame Energy Center



Drawn By	LMM	06/21/17
Checked By	LMH	06/21/17
Approved By	CVH	06/21/17
Project Number	002-213	
Drawing Number	002-213-B008	
	2	Figure

APPENDIX A
P.E. CERTIFICATION

**CLECO BRAME ENERGY CENTER
FLY ASH POND
CCR SEISMIC IMPACT ZONES ASSESSMENT**

PROFESSIONAL ENGINEER CERTIFICATION

I hereby certify that I have performed a seismic impact zones assessment for Cleco's Brame Energy Center Fly Ash Pond in accordance with the 40 CFR 257.63 CCR requirements. Based on the results from the seismic impact zones assessment for the Fly Ash Pond, Providence concludes that the surface impoundment is not located in a seismic impact zone that will exceed 0.10 g in 50 years. The Fly Ash Pond meets the requirements at 257.63 of the CCR regulations.

James C. Van Hoof

Name

24630

Registration No.

LA

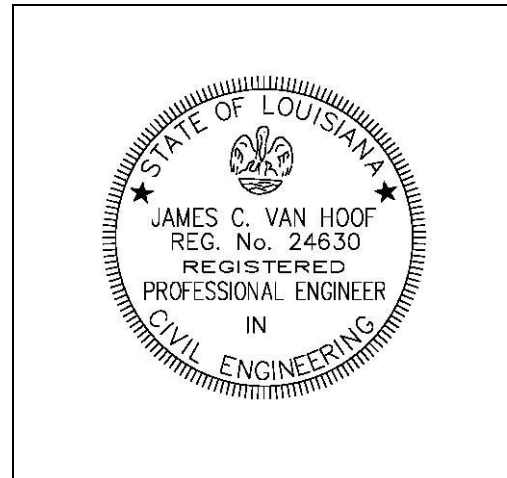
State

James C. Van Hoof, P.E.

Signature

9/19/18

Date



(Seal)