

# ENERGY MATTERS

News, Resources, & Answers for Cleco Customers

Fall 2004

## PREPARING FOR WINTER

Now is the time to prepare your home for the cold weather ahead. Since air leaks can dramatically drive up your home energy costs, caulking cracks around doorframes and windows, as well as replacing worn door gaskets, can help lower your energy bills. The shorter days during the winter mean you'll use your home lighting more. Keep fixtures and bulbs clean to get maximum benefit.

When buying light bulbs, the wattage rating tells you only the amount of power it takes to make a bulb work. The amount of brightness is measured in lumens. Larger wattage bulbs are usually more efficient, whether incandescent or compact fluorescent, producing more lumens per watt than smaller bulbs.

Light  
Output  
**840**  
Lumens

Energy  
Used  
**60**  
Watts

Life  
**1000**  
Hours



Some major air leak areas for the average home are: air ducts; window sashes and frames; fireplaces; door sashes and frames; plumbing utilities and wall penetrations; furnace flues; attic entrances; wall outlets; and recessed light fixtures.



## PAY YOUR BILL ANY WAY YOU WANT

With the addition of credit and debit card and electronic check payment through Speedpay, Cleco is now able to offer a full range of payment options to customers.

Customers may pay bills in person, at a Cleco customer service office or pay agent, pay by mail, pay online through CheckFree, or pay through the Speedpay option by phone at **1-866-735-7739** or online at [www.cleco.com](http://www.cleco.com). Speedpay charges a \$4.10 convenience fee for each transaction.



1 . 8 0 0 . 6 2 2 . 6 5 3 7 . W W W . C L E C O . C O M

  
**CLECO**  
ALL DAY, EVERY DAY

## CUSTOMERS WANT TO KNOW?

### > Why has Cleco been replacing white dusk-to-dawn light bulbs with yellow bulbs?

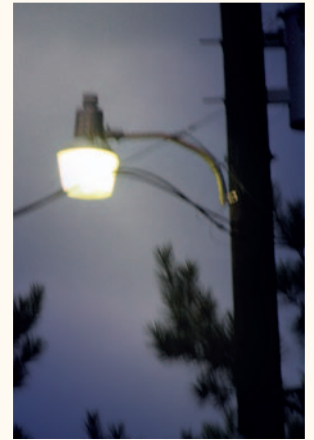


The yellow bulbs are high pressure sodium bulbs and have several advantages over the white, metal halide bulbs.

High pressure sodium bulbs have a longer life and project a wider beam. In addition, they attract fewer bugs than the white bulbs.



The darkness of night can hide all kinds of hazards around your home and property and darkness can be an invitation to vandalism and crime. Reduce the risk of accidents, extend your time outdoors and protect your home and family against crime.



The 100-watt high pressure sodium lamp creates a yellow glow and is installed on an aluminum or galvanized steel bracket. It is equipped with a photocell that automatically turns the light on at dusk and off at dawn.

We will install this light on an existing Cleco pole\* and provide lifetime maintenance or replacement, all for a low monthly base rate of \$6.80 plus a monthly fuel charge. This charge is simply added to your regular Cleco bill.

If you are interested in a Night Watchman light, contact us by e-mail at [www.cleco.com](http://www.cleco.com) or call **1-800-622-6537** to speak to a representative.

*\* Additional costs will be incurred for installation of a new pole.*

## ENERGY EMERGENCY DEFERRED BILLING PROGRAM CONTINUES TO ACCEPT ENROLLMENTS

Cleco's Energy Emergency Deferred Billing Program allows some customers to defer an excess portion of their bill for several months during an energy emergency declared by the LPSC. Under program guidelines, eligible Cleco customers may defer an amount which exceeds their normal bill amount for the period of time specified in the LPSC-declared energy emergency.

Customers must meet certain eligibility requirements in order to qualify for the program, and must re-qualify every two years. For eligibility requirements and enrollment information, visit [www.cleco.com](http://www.cleco.com), call **1-800-622-6537**, or visit your nearest Cleco customer service office.

