

CLECO Energy-Efficiency Portal Contractor Login Screen



[Home](#) [Shop](#) ▾ [More](#) ▾



[My Cart](#) ▾

Please log in to enter the CLECO Energy-Efficiency Portal.

Email Address *

Password *

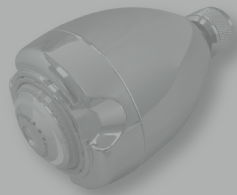
[Log In](#)

[Forgot password?](#)

What's New



Simply Conserve
9 Watt A19 LED Lamp
(60 Watt Eqv.)
\$1.50



Niagara Conservation
Earth® Showerhead
(1.5 gpm)
\$3.25



Niagara Conservation
Deluxe Kitchen Faucet Aerator
(1.5 gpm)
\$1.85



Cleco

Cleco Energy Efficiency Program
1530 Dove Park Road
Mandeville, LA

1-833-373-6842

energyefficiency@cleco.com

©2018 cleco.com

Navigation

[Terms & Conditions](#)
[Warranty](#)
[Website Privacy Policy](#)
[Shipping & Returns](#)
[Contact Us](#)

Categories

[Quick Order Form](#)

CLECO Energy-Efficiency Portal

Welcome Screen



[Home](#) [Shop](#) ▼ [More](#) ▼



[My Cart](#) ▼

Welcome to the CLECO Energy-Efficiency Portal

[Go to the Quick Order Form](#)

What's New



Simply Conserve
9 Watt A19 LED Lamp
(60 Watt Eqv.)

\$1.50



Niagara Conservation
Earth® Showerhead
(1.5 gpm)

\$3.25



Niagara Conservation
Deluxe Kitchen Faucet Aerator
(1.5 gpm)

\$1.85



Cleco

Cleco Energy Efficiency Program
1530 Dove Park Road
Mandeville, LA

1-833-373-6842

energyefficiency@cleco.com

©2018 cleco.com

Navigation

[Terms & Conditions](#)
[Warranty](#)
[Website Privacy Policy](#)
[Shipping & Returns](#)
[Contact Us](#)

Categories

[Quick Order Form](#)

CLECO Energy-Efficiency Portal

Quick Order Form



Home Shop ▾ More ▾






🔍 My Cart ▾



(*Whole Case Orders Suggested.)

Filter + Sort by: Featured ▾

Add All to Cart

	Simply Conserve 9 Watt A19 LED Lamp (60 Watt Eqv.) Case Quantity: 50*	\$1.50	0	+ -	Add to Cart
	Niagara Conservation Deluxe Kitchen Faucet Aerator (1.5 GPM) Case Quantity: 200*	\$1.85	0	+ -	Add to Cart
	Niagara Conservation Earth® Showerhead Chrome (1.5 GPM) Case Quantity: 50*	\$3.25	0	+ -	Add to Cart
	Niagara Conservation Earth® Showerhead White (1.5 GPM) Case Quantity: 50*	\$3.25	0	+ -	Add to Cart
	Niagara Conservation Standard Bath Aerator (1.0 GPM) Case Quantity: 500*	\$.49	0	+ -	Add to Cart



Home / Quick Order / Niagara Deluxe Kitchen Faucet Aerator (1.5 gpm)

Niagara Conservation



Deluxe Kitchen Faucet Aerator (1.5 GPM)

\$1.85

This Dual Spray Swivel Faucet Aerator offers two stream options: a full force multiple stream and a splash-free bubble stream. This aerator offers a pause-action valve

Full Description

0	+	Add To Cart
	-	

Description Information [Share](#)

(Whole Case Orders Suggested. Case Quantity: 200)

This Dual Spray Swivel Faucet Aerator offers two stream options: a full force multiple stream and a splash-free bubble stream. This aerator offers a pause-action valve that reduces flow to a trickle while keeping water temperature constant and contains a 360° swivel to direct the water flow where it's needed. The Dual Spray Swivel Aerator produces a pressure compensated stream that performs well at any water pressure. This aerator is also dual threaded to fit both male and female threaded faucets: Male: 15/16-27, Female: 55/64-27. This aerator also features a pause action valve that reduces flow to a trickle while keeping temperatures consistent.

Water Saving Aerator Features/Technical Data:

- Dual threaded
- Switch between sprays with a gentle twist
- Fits most male and female threaded faucets, Male: 15/16-27, Female: 55/64-27
- Does not contain any unplated brass parts; virtually a lead-free aerator
- 10-year warranty



WaterSense® Labeled

Saving Water Saves Energy

Saving water also saves energy by reducing the amount of energy used to heat the water. The savings differ whether you have an electric or gas hot water heater. This aerator is 30% more efficient than a standard 2.2 GPM aerator.

Spray Settings



This aerator has 2 spray settings. You can switch between a splash-free bubble spray or a powerful stream spray.

Flow Rate



Flow Rates are the measurement of water that flow out of your aerators per minute. They are usually measured in gallons per minutes or GPM. A standard aerator has a flow rate of 2.2 GPM. This aerator has a maximum flow rate of 1.5 GPM for increased efficiency.

CLECO Energy-Efficiency Portal

Shopping Cart



[Home](#) [Shop](#) ▾ [More](#) ▾

[Q](#) [My Cart \(3\)](#) ▾

Shopping Cart

Product	Quantity	Total	Action
 Niagara Conservation Deluxe Kitchen Faucet Aerator (1.5 GPM) Case Quantity: 200	3	\$5.55	X

Cart Overview

Subtotal	\$5.55
Shipping	+ Calculate Shipping
Total	\$5.55

[Continue Shopping](#)

[Checkout \(\\$5.55\)](#)



Cleco

Cleco Energy Efficiency Program
1530 Dove Park Road
Mandeville, LA

1-833-373-6842

energyefficiency@cleco.com

©2018 cleco.com

Navigation

[Terms & Conditions](#)
[Warranty](#)
[Website Privacy Policy](#)
[Shipping & Returns](#)
[Contact Us](#)

Categories

[Quick Order Form](#)

CLECO Energy-Efficiency Portal

Checkout



[Continue Shopping](#)

1 Customer Information

Not Andrew? [Sign Out](#)

First Name*

Last Name*

Company Name*

Phone Number*

Address Line 1*

Address Line 2*

Suburb/City*

Choose a Country*

State/Province*

Zip/Postcode*

Save this address in my address book

2 Shipping Method

Please enter your shipping details to see available shipping methods

- Purchase Order
 Credit Card Payment



3 Order Overview



(3) Niagara Deluxe Kitchen Faucet Aerators (1.5 GPM)

\$5.55

Subtotal \$5.55

Grand Total \$5.55

Have a coupon or gift certificate?

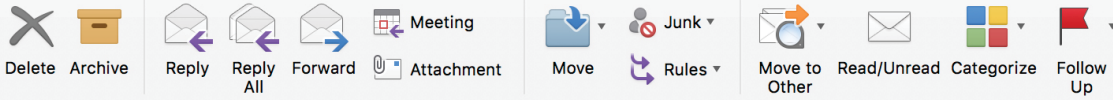
[Complete Checkout](#)

Order Comments:

CLECO Energy-Efficiency Portal Order Tracking Email

Your CLECO Energy-Efficiency Portal Order Has Been Updated (#300) - Inbox

Message



Your CLECO Energy-Efficiency Portal Order Has Been Updated (#300)



CLECO Energy-Efficiency Portal <energyefficiency@cleco.com>
Thursday, March 29, 2018 at 2:17 PM
To: Brian McKee



Order Status Changed

Hi Brian

An order you recently placed on our website has had its status changed.

The status of order #300 is now **Shipped**

Order Details

Order Total:	\$5.55
Date Placed:	March 29th 2018
Payment Method:	Credit Card

Tracking Number: 1002100310041005100610078910

[Click here to view the status of your order](#)

CLECO Energy-Efficiency Portal
energyefficiency@cleco.com