



- > Power lines can be underground, making it unsafe to dig without calling **811** first. By calling this free service, you can know what's below before you dig.



- > It is against the law to work within 10 feet of any high voltage overhead electric utility line without notifying the owner or operator of the line 48 hours before starting the work.



- > Power lines are not insulated for public safety.

Teach your family and friends about electrical safety by visiting Cleco.com. Our Web site offers additional safety information for adults and provides a fun way for children to learn more about electrical safety through Cleco's Electrical Safety World. Click on this icon to enter Electrical Safety World.

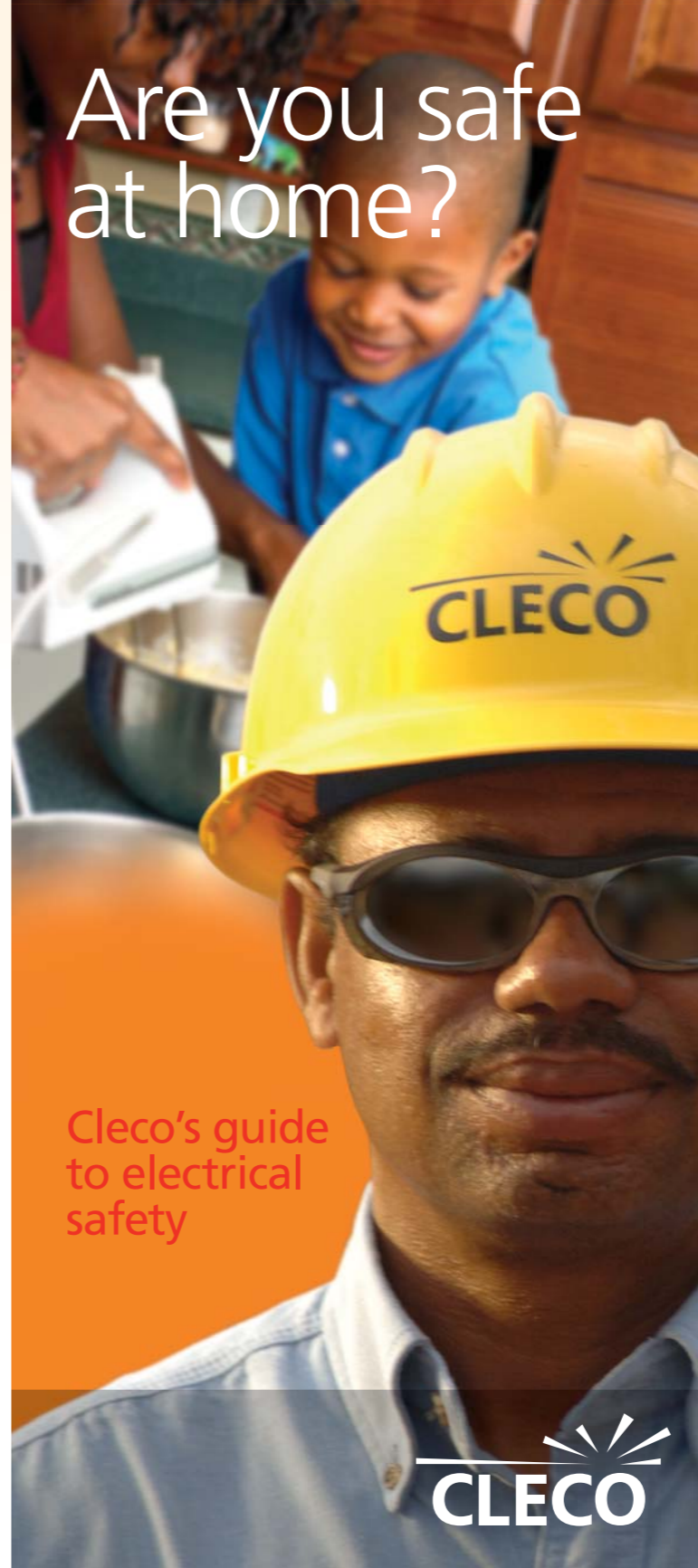


We care about your safety.

Call us day or night to report a dangerous situation with electricity. Visit Cleco.com for more safety information.

1.800.622.6537 | WWW.CLECO.COM

Are you safe at home?

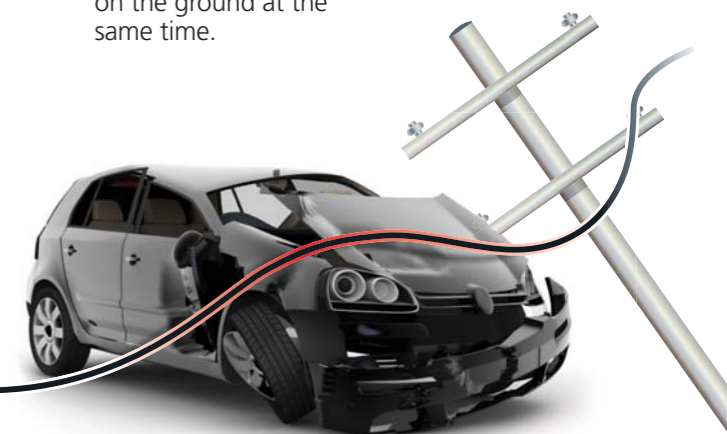


Cleco's guide to electrical safety



Did you know?

- > Birds can sit on power lines safely as long as they do not touch the line and another object at the same time. If this happens, the bird becomes a path for electricity to go to the ground, putting it in danger of electrocution.
- > If a power line falls on your car, stay inside until help arrives. If the car catches fire, jump away from the car without touching the car and the ground at the same time. Shuffle away always keeping both feet on the ground at the same time.



- > Shooting or throwing objects at electrical equipment or wires can cause costly damage, result in power outages and be a deadly mistake.

Basic facts about electricity may seem simple but remembering them can save your life.

Water and electricity don't mix:

- Never stand in water or on a damp surface while using electrical appliances or tools.
- Don't use water to extinguish an electrical fire.



- Never touch electrical cords, appliances or tools with wet hands.
- Keep bathroom and kitchen electrical appliances away from water.



Dangerous electrical current can be in unlikely places:



- Never use an electrical tool or appliance that has a frayed cord.
- Always cover electrical outlets with protectors when not in use.



- Never overload an electrical outlet or extension cord.
- Don't run electrical cords under rugs or attach them to walls with nails or staples.
- Never put a metal object into an electrical appliance, like a toaster, unless it is unplugged.



Electricity is always trying to find a way to get to the ground:



Never climb trees that are near a power line.



Always look up to locate power lines before using a ladder or any long tool.



Never fly a kite near a power line, and don't grab a kite that is tangled in a power line.



Don't prune trees that are near or touching a power line.